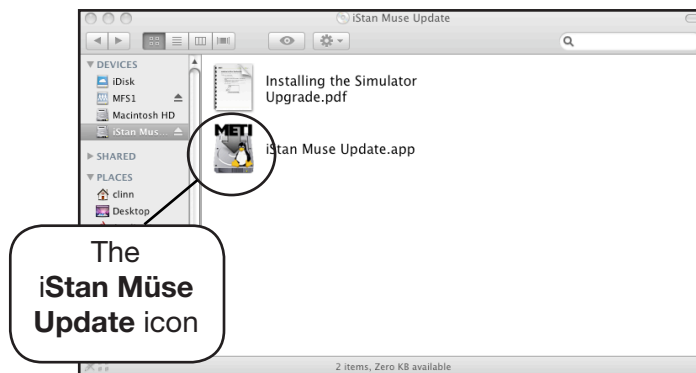


# Installing the iStan Simulator Upgrade

To install the iStan Simulator Upgrade:

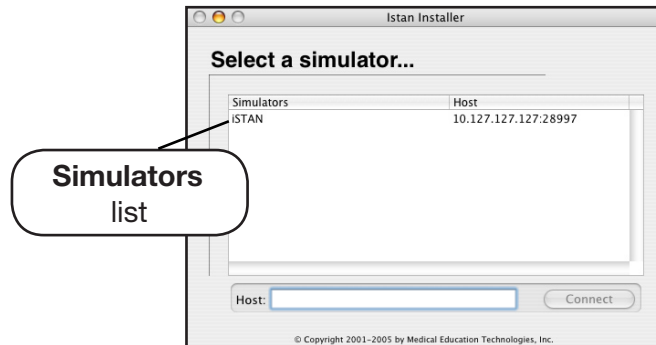
1. Power on the iStan simulator.
2. Power on the Instructor Workstation.
3. From the AirPort icon on the Instructor Workstation, connect to the iStan network.
4. Insert the iStan Simulator Upgrade CD into the Instructor Workstation. The **iStan MUSE Update** icon appears on the desktop.
5. Double-click on the **iStan MUSE Update** icon.

The iStan Müse Update window appears showing the contents of the iStan Simulator Upgrade CD.



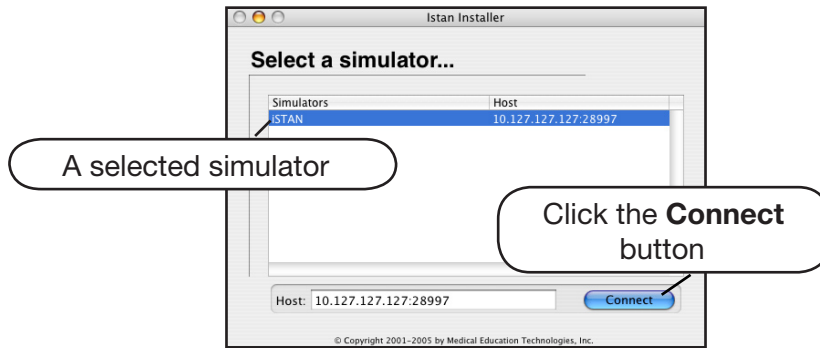
*The Contents of the iStan Simulator Upgrade CD*

6. Double-click the **iStan Müse Update** icon.  
The Select a simulator dialog box appears.



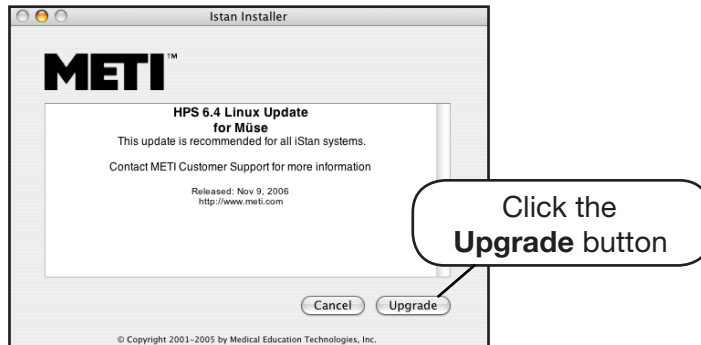
*The Select a Simulator Dialog Box*

7. Select the simulator to update from the **Simulators** list.
8. Click the **Connect** button.



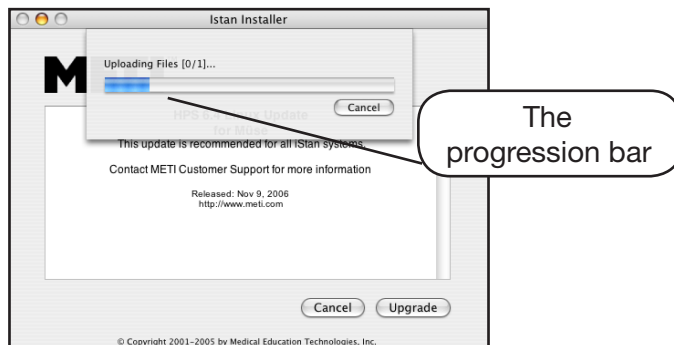
*Connecting to a Simulator*

9. Once the simulator is connected, click the **Upgrade** button.



***Clicking Upgrade***

Installation takes several minutes. A progression bar appears indicating the status of the update.



***Installing the Simulator Upgrade***

A dialog box appears showing the installation has been successful.

10. After the installation has completed, click the **Quit** button.



### *Completing the Installation*

The simulator restarts automatically.